



PG RESLIFE 2024/25

Everything you
need to know about
finding your home, here
at the University of Bath



#BelongatBath

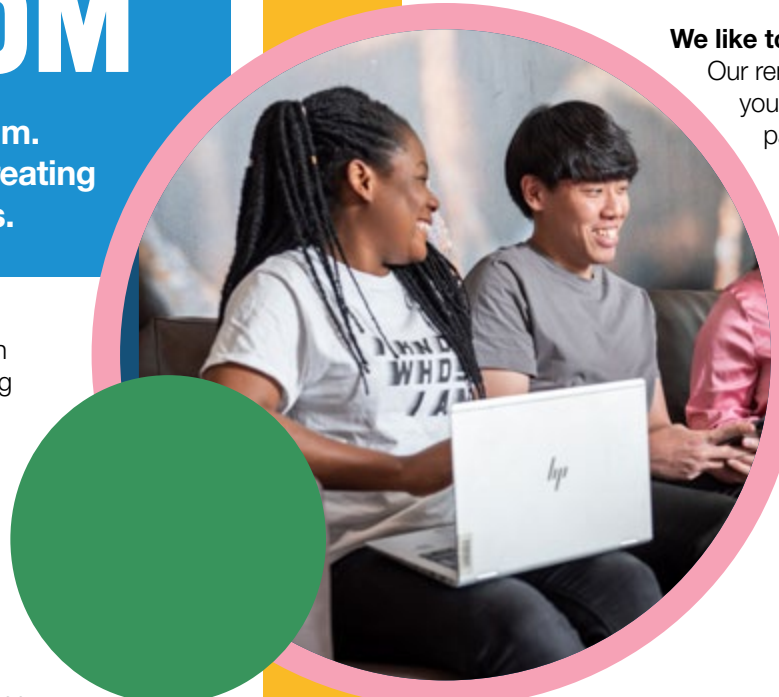
Campus
Services



UNIVERSITY OF
BATH

MORE THAN A ROOM

Living in university accommodation gives you more than just a room. It's our goal to make student accommodation feel like home, by creating a sense of community and helping you to create lifelong memories.



FINDING YOUR COMMUNITY

Meeting new people and finding your community is as important as the type of room you apply for. With over a 1,000 postgraduate students in our accommodation, you will join a large and vibrant postgraduate community. Our **ResLife team** are here to help you discover your community, with events throughout the year. Enjoy a programme of welcome events, classes, activities, UK sight-seeing and more.

Our dedicated **Postgrada ResLife Ambassadors** are here to make sure you feel at home in your accommodation

– whether you have a question about meeting people, keeping healthy, or balancing your studies and personal life.

Beyond your bedroom and shared spaces in your household, we have dedicated spaces to meet people. Whether you need somewhere to study or socialise, you can use our **Living Lounges** or **Virgil Building**, our student hub in the city centre.



SUPPORTING YOU EVERY STEP OF THE WAY

We're here to help you to settle into university life as quickly and easily as possible. Our **ResLife team** can help you get the most out of your time here. You'll find support in our accommodation centres and from our staff who work in and around your accommodation.

Find out more about...
support that we provide



FEELING SAFE AND SECURE

You have the support of our Security Team **24-hours a day, seven days a week**. All our accommodation has secure card access with monitored CCTV, providing a safe and secure environment for everyone. Our Security Team are trained in first aid and mental health first aid. They can offer welfare support and help you with crime prevention. You'll often see our dedicated accommodation Security team checking on your accommodation and offering support to students.

EVERYTHING YOU NEED

We like to keep our accommodation simple. Our rent is **all-inclusive**, meaning that all your utility bills are covered by one regular payment – including **fast WiFi** in all our rooms. We have accommodation in the **city** and on **campus**, with great transport links between. Most of our students live in houses or flats with bedrooms grouped around communal kitchens or social spaces.

We offer a range of accommodation options across our managed and partnership accommodation (nominations), including shared houses, ensuite rooms and studios, so you can find a home to suit your individual needs and budget.

Find out more about...
accommodation options



FINDING THE RIGHT HOME

We're committed to providing a safe and happy environment for you to live in. We **value diversity and inclusivity** and want everyone to be treated with respect. If you're an eligible first-year undergraduate, you can tell us if you'd prefer to live in accommodation that's designated as:



If you have a **diagnosed medical or mental health condition**, or a **disability** that will have an impact your accommodation choices, our team will work with you to assess your requirements and find you a suitable room.

If you identify as **transitioning gender** as we may be able to place you in an ensuite bedroom or a studio.

If you identify as **non-binary** or **intersex** as we can look at allocating you to a mixed-gender flat.



FAQs

CAN I APPLY FOR ACCOMMODATION?

You can apply for accommodation if you are either:

- a new overseas, fee-paying postgraduate
- a new MA Contemporary European Studies (Euromasters) Student
- a summer pre-session English student with a conditional or combined offer of admission or if you have specific medical conditions or disabilities

Care Leavers, former Foyer residents, refugees and estranged students are guaranteed a place in university accommodation for 365 days a year for the duration of your course.

You can also apply for our accommodation if you are a home postgraduate. (We have a limited number of rooms for home postgraduate students. These are subject to demand and availability. Waiting list applications open 1 July, subject to availability.)

AM I GUARANTEED ACCOMMODATION?

You will be guaranteed accommodation if:

- you apply on or before 1 July
- you are eligible according to the criteria
- your course status becomes "Unconditional Firm" by the 31 August

WHEN DO I NEED TO APPLY?

Applications for 2024 open on 13 March, and close on the 1 July. The postgraduate accommodation waiting list opens on the 8 July, this is not guaranteed and subject to availability.

HOW DO I PAY?

Payment can be made by Direct Debit, card, bank transfer or Flywire for international payment. More information on paying for your accommodation can be found on our webpages. www.bath.ac.uk/guides/paying-your-student-accommodation-fees/



University of Bath Managed Accommodation				
	Location	Room Type Availability	Price Range (Per week)	Amenities
Canal Wharf	In the City	Standard Room	£167	Living Lounge Circuit Laundry Facilities
		Studio	£231	
Clevelands Building	In the City	Standard Room	£177 - £178	Living Lounge Circuit Laundry Facilities
		Ensuite	£214 - £219	
Green Park House	City Centre	Ensuite	£211	Living Lounge Circuit Laundry Facilities
		Studio	£254	
		Twodio	£245	
Pulteney Court	In the City	Standard Room	£167	Living Lounge Circuit Laundry Facilities
		Studio	£231	
Polden	On Campus	Ensuite	£271	Living Lounge Inclusive Laundry Facilities
Scala	In the City	Studio	£260 - £277	Living Lounge Inclusive Laundry Facilities
		Ensuite	£218 - £245	
Eveleigh Waterside	City Centre	Studio	£302 - £389	Living Lounge Games Room Inclusive Laundry Facilities
		Ensuite Twodio	£211 - £221	
		Duplex Studio	£373 - £389	
Aquila Court	In the City	Standard Room	£200	Living Lounge On-Site Gym
		Ensuite	£225	
		Studio	£249	
Nominations Agreements Accommodation				
Centurion House (Host)	In the City	Ensuite	£220 - £270	Communal Lounge & Games Area Circuit Laundry Facilities
		Studio	£330 - £360	
		Twodio	£200	
Charlton Court (Unite Students)	In the City	Studio	£295 - £329	Common Room & Games Area Laundry Facilities
The Brook (This is Fresh Living)	In the City	Ensuite	£228	Communal Lounge & Games Area On-Site Gym Laundry Facilities
Family and Couples Accommodation				
Canal Wharf	In the City	Double Room	£202	Living Lounge Circuit Laundry Facilities
		1 Bed Flat	£278	
Clevelands Building	In the City	Couple Studio	£289	Living Lounge Circuit Laundry Facilities
		1 Bed Flat	£278	
Cotswold House	On Campus	Family House	TBC	Self-Contained Facilities
Esther Parkin	On Campus	2 Bed Flat	TBC	Self-Contained Facilities
		3 Bed Cottage	TBC	
Eveleigh Waterside	City Centre	Loft Apartment	£486	Living Lounge & Games Room Inclusive Laundry Facilities
		Duplex Studio	£373 - £389	
		Studio	£302 - £389	

If you are viewing this document as a digital PDF, please click each accommodation name for further information.

What's included:



24/7 Security



Cleaning Service



High Speed Wi-Fi



Utilities



PG ResLife Ambassadors



Contents Insurance



Events



Secure Bike Storage

